

ROTARY LOBE



**classic+**



**wright flow**  
TECHNOLOGIES<sup>®</sup>

**Capacity** to 189 m<sup>3</sup>/hr / 832 USGPM

**Pressure** to 12 BAR / 174 PSI

**Viscosity** to 200,000 cSt / 910,000 SSU

**Temperature** to 180°C / 355°F

HYGIENIC PUMP SOLUTIONS

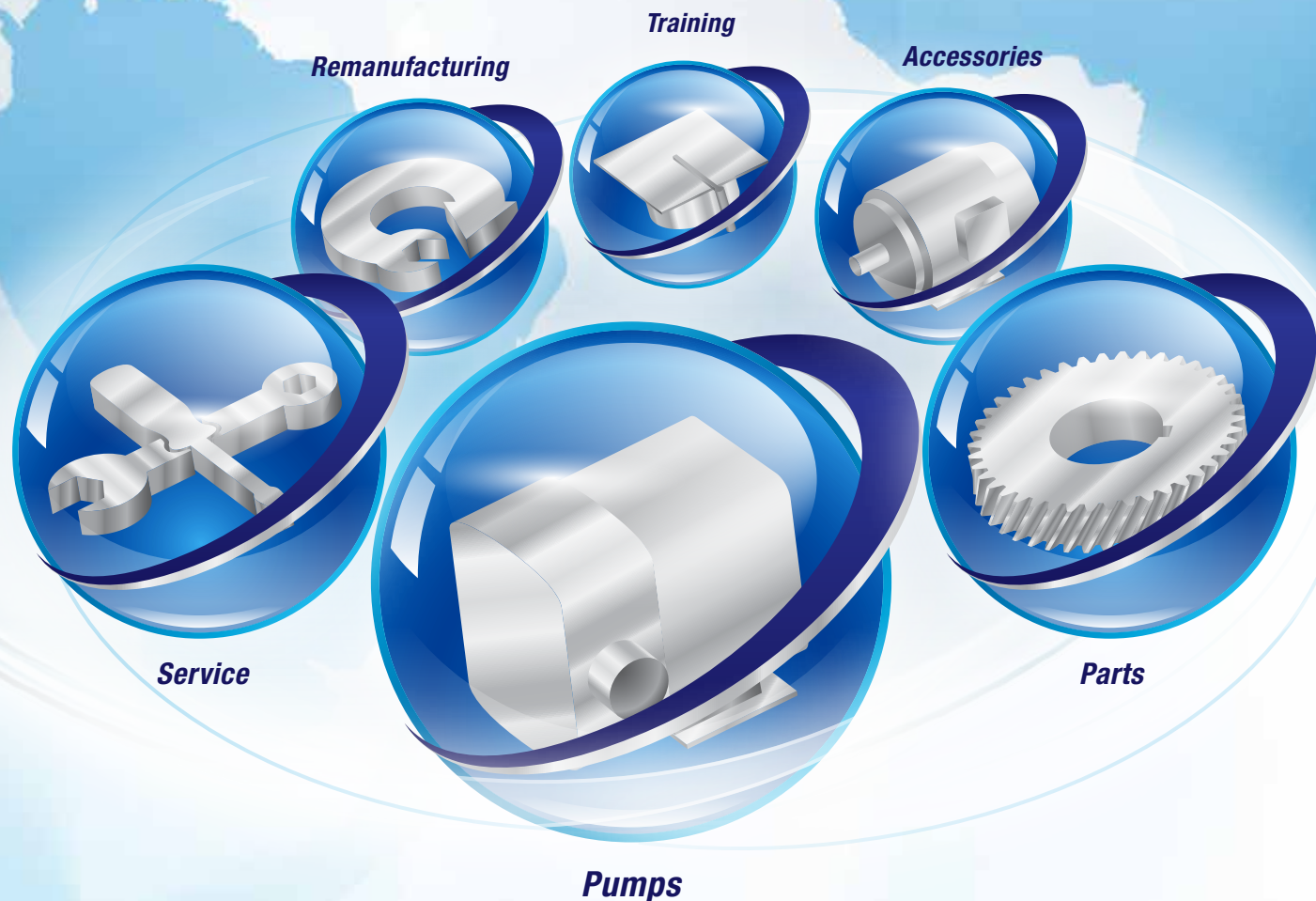
**IDEX**  
FLUID & METERING

**YOUR COMPLETE  
Hygienic Solutions Provider**

- GLOBAL PRESENCE WITH LOCALIZED SERVICE
- BROADEST PD PUMP OFFERING IN THE INDUSTRY
- COMPLETE PARTNER FOR YOUR HYGIENIC PROCESS



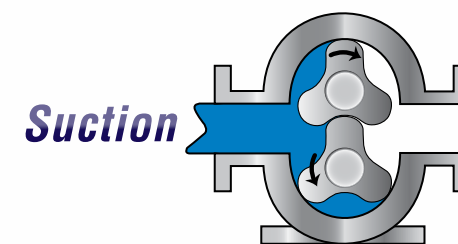
Around the world, Wright Flow Technologies provides solutions for challenges in fluid handling. You can count on the reliability of Wright Flow hygienic positive displacement (PD) pumps. Matching the right pump with your fluid processing needs is easy with innovative, robust designs, cleanability & an extensive product offering.



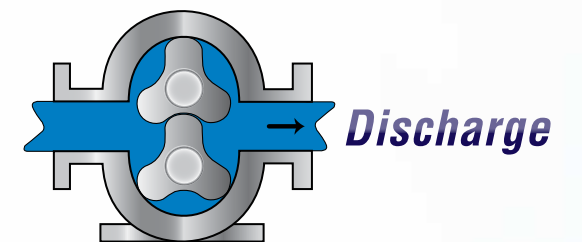
As a proven classic, this pump design has endured the test of time. You will find these traditional rotary lobe pumps working reliably around the globe. A simple & economical solution for hygienic processing needs.



**How it Works**



**Suction**



**Discharge**

Wright Flow Technologies' rotor lobes rotate around the circumference of the channel in the pump casing. This continuously generates a partial vacuum at the suction port as the rotors unmesh, causing fluid to enter the pump.

The fluid is transported around the channel by the rotor lobes, & is displaced as the rotor lobes re-mesh, generating pressure at the discharge port. Pump output is directly proportional to speed, and direction of flow is reversible.

# classic+



## CLEANABILITY

- Modular pump design promotes easy disassembly for COP (Clean Out of Place) & CIP (Clean In Place)
- Casing profile cusps maximize efficiency & draining capability

## PERFORMANCE

- Timed, non-contacting rotors minimize shear while providing extended run-dry capability
- Helical timing gears provide high torque & quieter operation for extended pump life
- Tapered roller bearings provide higher operating speeds & better discharge pressures

## EASE OF MAINTENANCE

- Removable foot for easier placement
- Classic RLP design



COMPLIANT WITH THE FOLLOWING STANDARDS



## Preventive Maintenance Kits

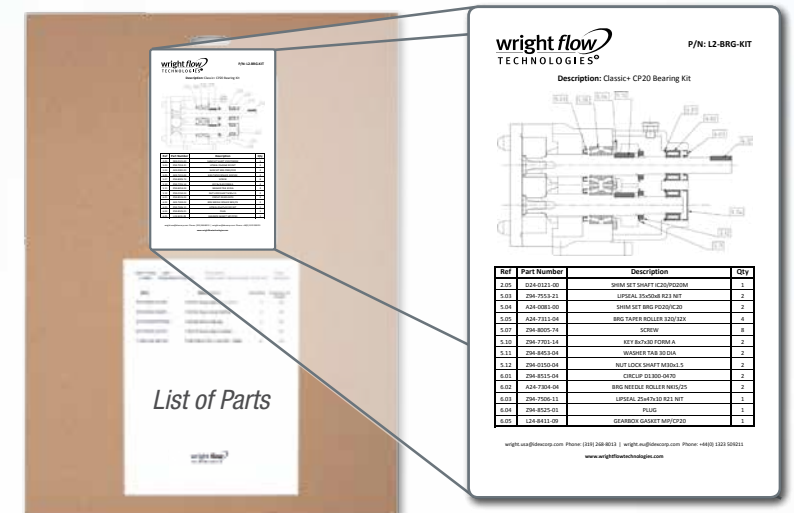
ENSURE TROUBLE-FREE OPERATION & SUPERIOR PERFORMANCE

### BENEFITS OF MAINTENANCE KITS:

- Everything you need in one place
- Reduce frequency of repairs
- Increase service life
- Increase uptime
- Save time & money
- Kits include exploded diagram & parts list



### BACK OF MAINTENANCE KIT:



### REBUILD VS. REPLACE:

- Wright Flow kits are designed to save time & money, making preventive maintenance easier & more cost-effective
- Wright Flow pumps are designed & built to the highest standards, for long life & to be rebuilt instead of replaced when applicable
- Tool kits also available

**PORTING OPTIONS:**

- Complete range of hygienic clamp, screw, flange & industrial screw connections
- Tri-clamp, flanged, DIN, IMDA, NPT, BSP, etc.

**SEAL OPTIONS:**

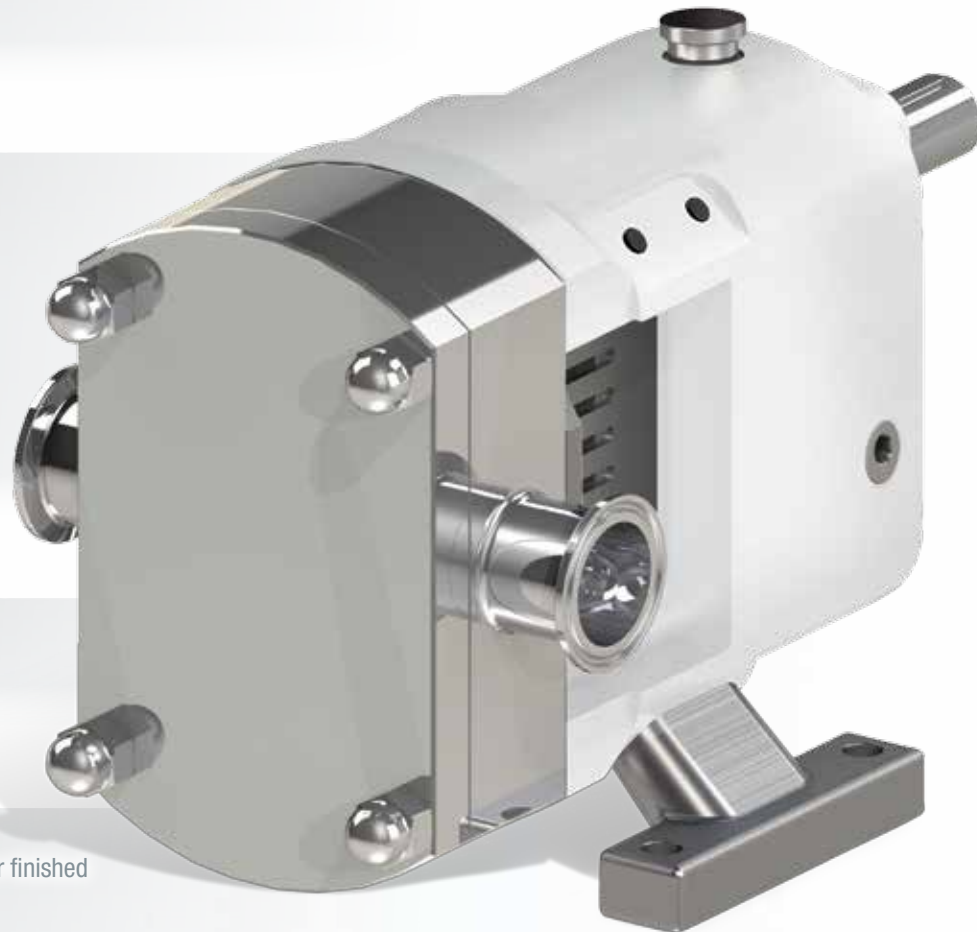
- Single O-ring
- Single mechanical
- Single mechanical with flush or quench
- Double mechanical with flush
- Gland packing
- Gland packing with lantern ring with flush
- Complete range of material options

**GEAR BOX OPTIONS:**

- Powder-coated or painted standard (size dependent)

**ROTOR & CASING OPTIONS:**

- 316L stainless steel pump casing with interior finished to 3-A standards
- 316L stainless steel rotors
- Improved surface finishes & electropolishing optional
- Front cover jacket or rotor case saddles



**PERFORMANCE RANGE:**

- CAPACITY** to 189 m<sup>3</sup>/hr / 832 USGPM
- PRESSURE** to 12 BAR / 174 PSI
- VISCOSITY** to 200,000 cSt / 910,000 SSU
- TEMPERATURE** to 180°C / 355°F

COMPLIANT WITH THE FOLLOWING STANDARDS



Classic+ Model	Displacement		Max Pressure		Max Speed	Standard Ports		Max Capacity		Max Temperature	
	l/rev.	USG/rev.	BAR	PSI	RPM	mm	in.	m <sup>3</sup> /hr	USGPM	Deg. C	Deg. F
10/0005/12	0.046	0.0122	12	174	1400	25	1"	3.9	17.1	150	300
10/0008/08	0.083	0.0219	8	115	1400	38	1 1/2"	7	30.7	150	300
10/0011/05	0.111	0.0293	5	70	1400	38	1 1/2"	9.3	41	150	300
20/0020/12	0.202	0.0534	12	174	1000	38	1 1/2"	12.1	53.4	150	300
20/0031/07	0.313	0.0827	7	100	1000	50	2"	18.8	82.7	150	300
30/0069/12	0.694	0.1834	12	174	750	50	2"	31.2	137.6	150	300
30/0113/07	1.125	0.2972	7	100	750	76	3"	50.6	222.9	150	300
40/0180/12	1.8	0.4756	12	174	700	76	3"	75.6	332.9	150	300
40/0250/07	2.5	0.6605	7	100	700	101	4"	105	462.4	150	300
50/0351/12	3.514	0.9284	12	174	650	101	4"	137	603.5	180	355
50/0525/08	5.25	1.387	8	115	600	150	6"	189	832.2	180	355

**CHEMICAL**  
Raw Ingredients, Chemical Transfer, Solvent Recovery

**PERSONAL CARE**  
Skin Care Products, Toothpastes, Cosmetics, Shower & Shaving Liquids, Hair Care Products

**BEVERAGES**  
Distillers & Vinters, Fruit & Vegetable Purees, Carbonated Drinks, Juices

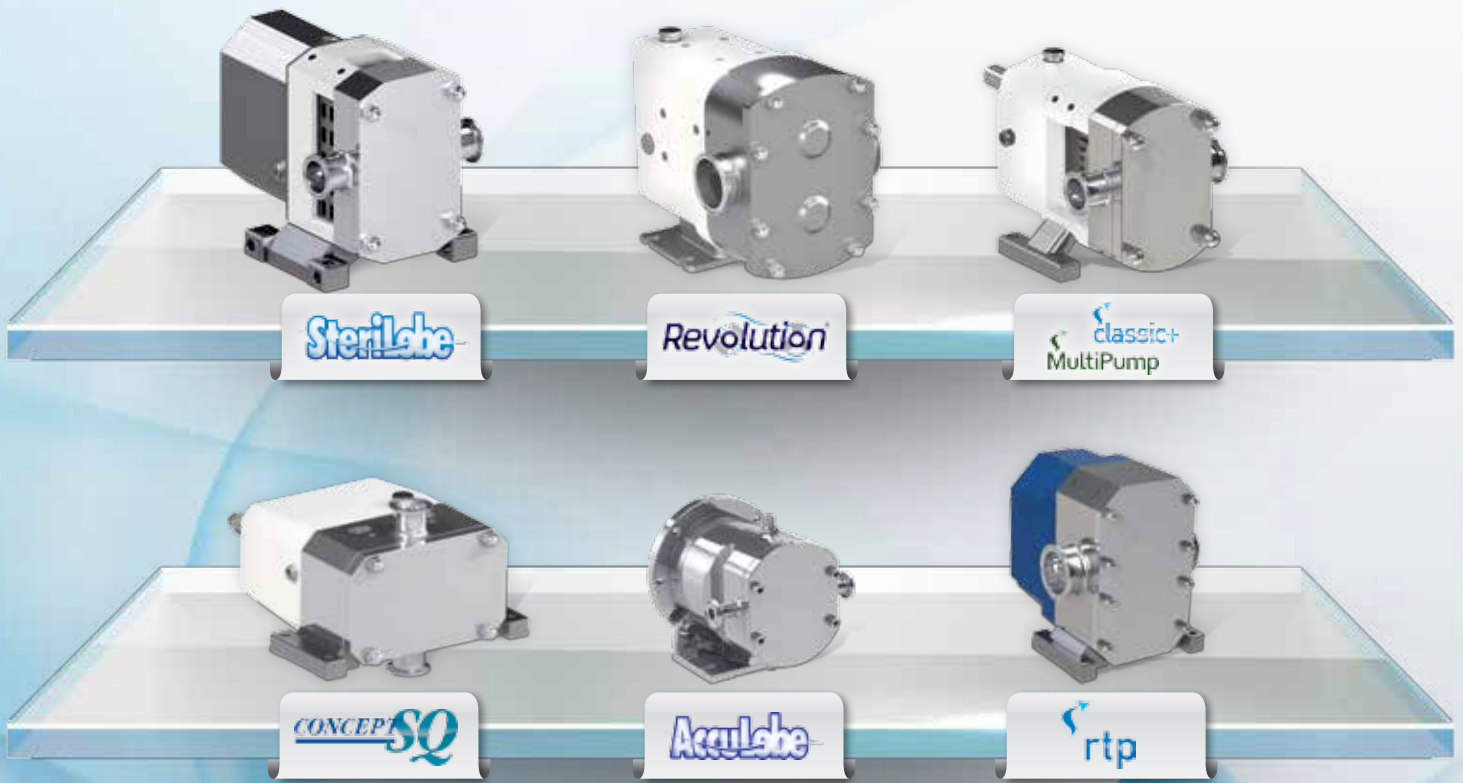
**FOOD**  
Baby Food, Edible Oils, Soft Fruits & Vegetables, Soups & Sauces, Egg, Fish, Meat, Poultry, Whey Proteins, Confectionary

**DAIRY**  
Butter, Cheese, Cream, Milk, Yogurt, Yogurt Fruits

**PHARMACEUTICAL**  
Medicinal Chemicals, Creams & Ointments, Syrups, Injectables, Ultra Filtration, Blood & Plasma Processing



## Rotary Lobe Pumps



FOR MORE INFORMATION, CONTACT YOUR LOCAL AUTHORIZED  
WRIGHT FLOW TECHNOLOGIES DISTRIBUTOR OR CONTACT US AT:

Distributed By:

[WRIGHTFLOWTECHNOLOGIES.COM](http://WRIGHTFLOWTECHNOLOGIES.COM)

