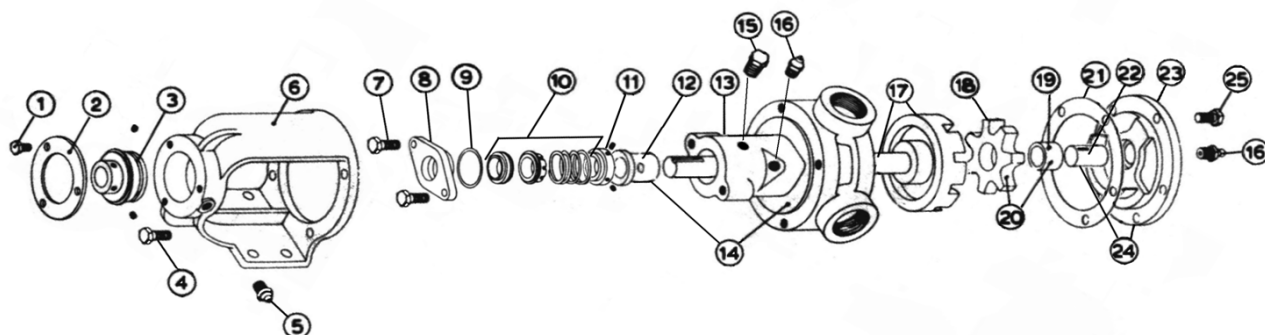


**MODEL H-115 with Mechanical Seal**

Subject to change without notice  
 F.O.B. Factory

Supercedes all previous parts lists



ITEM	DESCRIPTION	MATERIAL	PART NUMBER	QTY	PRICE
1	Bearing Retainer Bolts	1/4-28X5/8 Hex Cap Screw GR5	355-00-006-670	4	
2	Bearing Retainer	Alluminum	145-02-050-010	1	
3	Ball Bearing	Steel	150-00-125-605	1	
4	Bracket Bolt	5/16-18X3/4 Hex Cap Screw GR5	355-00-035-670	4	
5	Grease Fitting	1/8 NPT Straight Grease Fitting	325-00-025-605	1	
6	Bracket	Iron	165-02-005-310	1	
7	Seal Seat Retainer Fasteners	Steel - Hex Head Cap Screw 5/16" Lock washer	355-00-050-670 355-00-529-660	2 2	
8	Seal Seat Retainer	Iron Iron - PTFE Seal Only	470-02-070-310 470-02-082-310	1 1	
9	Seal Seat Retainer Oring	Viton #03	360-00-500-850	1	
10	Mechanical Seal Ass'y	Buna / Carbon vs Ni-Resist / Steel - BF-871 Buna / Carbon vs Ceramic / SS - BF-1C1 Viton / Carbon vs Ni-Resist / Steel - XF-871 Viton / Carbon vs Ceramic / SS - XP-1C1 PTFE -	335-00-070-045 335-120-0024 335-00-070-055 335-00-070-050 355-00-070-204 -	1 1 1 1 1 -	
11	Driving Ring	Steel 1/4-20X1/4 Cup Point SS Screw	330-00-050-620 355-00-271-660	1 1	
12	Casing Bushing	Bronze Carbon	175-02-070-050 2-095-011-880-02	1 1	
13	Casing	Iron - Buna and Viton Seal Only Iron - PTFE Seal Only	190-02-205-310 190-02-285-310	1 1	
14	Casing and Bushing Ass'y	Iron / Bronze - Buna or Viton Seal Only Iron / Carbon - Buna or Viton Seal Only Iron / Bronze - PTFE Seal Only Iron / Carbon - PTFE Seal Only	185-03-205-330 185-03-205-332 Consult Factory Consult Factory	1 1 1 1	
15	Pipe Plug	1/8 NPT Hex Head Plug	390-00-050-605	1	
16	Grease Fitting	1/4-28 Staight Grease Fitting	325-00-075-605	1	
17	Rotor and Shaft Ass'y	Iron / Steel -	455-03-104-349 -	1 -	
18	Idler	Iron	2-418-008-352-40	1	
19	Idler Bushing	Bronze Carbon	2-095-013-454-02 2-095-010-880-02	1 1	
20	Idler and Bushing ass'y	Iron / Bronze Iron / Carbon	285-03-080-330 285-03-080-332	1 1	
21	Head Gasket	Iron	245-00-046-240	2	
22	Idler Pin	Steel - Solid Steel - Grooved	295-00-050-690 295-00-040-690	1 1	
23	Head	Iron - Plain Iron - Relief Valve	2-370-001-100-00 265-02-060-310	1 1	
24	Head and Idler Pin Ass'y	Iron - Plain / Steel - Greasable Iron - Plain / Steel - Non-Greasable Iron - Relief Valve / Steel - Greasable Iron - Relief Valve / Steel - Non-Greasable	270-03-050-350 270-03-055-350 270-03-060-350 270-03-065-350	1 1 1 1	
25	Head Bolts	5/16-18X3/4 Hex Cap Screw GR5	355-00-035-670	5	