

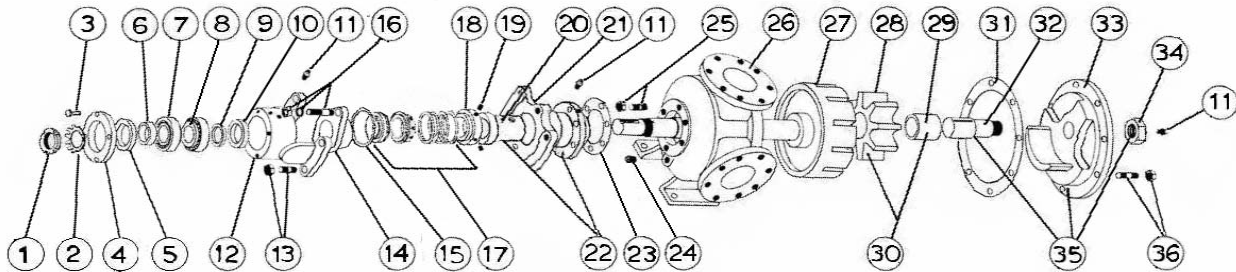
**VIKING HEAVY DUTY UNMOUNTED PUMP**

**BULLETIN: EVD-Q332S-V**  
**PAGE: 1**  
**EFFECTIVE: 11/2015**

**MODEL Q-332 with Mechanical Seal**

Subject to change without notice  
 F.O.B. Factory

Supersedes all previous parts lists



ITEM	DESCRIPTION	MATERIAL	PART NUMBER	QTY	PRICE
1	Locknut	Locknut N11	355-00-560-605	1	
2	Lockwasher	Lockwasher W11	355-00-552-605	1	
3	Bearing Cap Fasteners	Steel - 3/8-16x1 Hex Cap Screw Grade 5	355-00-065-670	4	
4	Bearing Cap	Iron	180-02-100-310	1	
5	Outer Lip Seal	Buna	195-00-325-120	1	
6	Bearing Spacer	Steel	490-00-150-605	1	
7	Ball Bearing Cup	Steel - 66461	150-00-275-605	2	
8	Ball Bearing Cone	Steel - 66225	150-00-300-605	2	
9	Inner Bearing Spacer	Steel	490-00-125-605	1	
10	Inner Lip Seal	Buna	195-00-300-120	1	
11	Grease Fitting	1/8 NPT Straight Grease Fitting	325-00-025-605	2	
12	Bearing Housing	Iron	140-02-200-310	2	
13	Bearing Housing Fasteners	Steel - 5/8-11x1 1/2 Hex Cap Screw Grade 5	355-00-143-670	4	
14	Seal Seat Retainer Fasteners	5/8-11x1 3/4 Hex Head Cap Screw Grade 5	355-00-146-670	2	
		5/8 Lock washer	355-00-541-660	2	
15	Seal Seat Retainer	Iron	470-02-700-310	1	
		Iron - PTFE Seal Only	470-02-716-620	1	
16	Seal Seat Retainer Oring	Viton	360-00-620-850	1	
17	Mechanical Seal Ass'y	Buna	335-610-0000	1	
		Viton	335-611-0000	1	
		PTFE / Carbon vs Ni-Resist / SS - QP171	335-00-250-204	1	
18	Driving Ring	Steel	330-00-175-620	1	
19	Set Screws	1/4-20x1/4 Cup Point Socket	355-00-271-660	1	
20	RBS Bushing	Bronze	175-02-250-050	1	
		Carbon	2-126-008-880-03	1	
21	Rotor Bearing Sleeve (RBS)	Iron	2-587-002-100-00	1	
		Iron - PTFE Seal	445-02-180-310	1	
22	RBS and Bushing Assembly	Iron / Bronze	450-03-120-330	1	
		Iron / Carbon	450-03-120-332	1	
23	RBS Gaskets	Standard	245-00-120-240	1	
24	Pipe Plug	Steel - 1/4-18 Hex Head Plug	390-00-125-605	3	
25	RBS Fasteners	Steel - 5/8-11x2 1/4 Hex Cap Screw Grade 5	355-00-152-670	6	
26	Casing	Iron	2-231-014-100-00	1	
27	Rotor and Shaft Ass'y	Iron / Steel	455-03-710-349	1	
		Ductalloy / Steel	455-03-710-139	1	
28	Idler	Iron	2-422-001-100-70	1	
29	Idler Bushing	Bronze	2-129-007-454-05	1	
		Carbon	2-129-009-880-05	1	
30	Idler and Bushing ass'y	Iron / Bronze	285-03-320-330	1	
		Iron / Carbon	285-03-320-332	1	
31	Head Gasket	Standard	245-00-070-240	3	
32	Idler Pin	Steel - Greasable	295-00-230-690	1	
		Steel - Non-Greasable	295-00-240-690	1	
33	Head	Iron - Relief Valve	265-02-540-310	1	
34	Idler Pin Nut	Steel 1 1/2-6 Finished Hex Jam Nut	355-00-625-660	1	
35	Head and Idler Pin Ass'y	Iron - Relief Valve / Steel - Greasable	270-03-540-350	1	
		Iron - Relief Valve / Steel - Non-Greasable	270-03-545-350	1	
36	Head Fasteners	Steel - 5/8-11x2 1/2 Hex Cap Screw Grade 5	355-00-155-670	8	
	Pedestal - Not Shown	Iron	375-02-050-310	1	