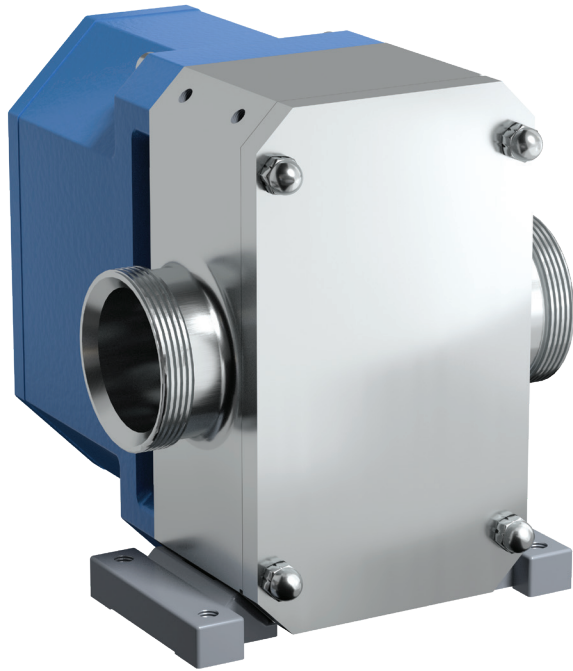




RTP® SERIES™

ROTARY LOBE PRODUCT LINE



FEATURES & BENEFITS

CLEANABILITY

- ▮ The simple design behind the rotor makes strip cleaning easy and fast
- ▮ Choose the cleaning process that fits your needs: COP (Clean Out of Place) or CIP (Clean In Place)

EASE OF MAINTENANCE

- ▮ Innovative front loading seal design enables quick inspection and easy servicing
- ▮ Sealed gearcase with long-life lubrication eliminates oil inspection and filling
- ▮ Easy to service design requires no special tools for disassembly and eliminates need for end clearance adjustments

PERFORMANCE

- ▮ Easily handles higher viscosity liquids with improved pressure capabilities for faster unloading
- ▮ Excellent displacement/weight ratios, meaning more in the tank & less in the cabinet
- ▮ Precision helical gears, rotors & shaft design, with optimized bearing position, minimize overhung load – extending seal & bearing life

THE COMPLETE SOLUTION FOR YOUR HYGIENIC TANKER SYSTEM

Designed specifically for the hygienic stainless steel road tanker industry, the RTP outperforms the competition by providing higher capacity, higher pressure and unmatched efficiency. The RTP can also reduce loading and unloading time by over 30%.

This increased performance, along with advanced durability, application flexibility, ease of installation and ease of maintenance provide a complete solution for your hygienic tanker needs.

PERFORMANCE

MODELS

Model	Displacement		Max Pressure		Max Speed	Standard Ports		Max Capacity		Max Temperature	
	USG/rev.	l/rev.	PSI	BAR	RPM	In	mm	GPM	m³/h	°F	°C
RTP20	0.264	1	145	10	1000	2 or 3	50 or 75	264	60	230	110
RTP30	0.338	1.28	174	12	1000	3 or 4	75 or 100	338	76.8	300	150



CAPACITY
to 338 GPM
(76.8 m³/h)



PRESSURE
to 174 PSI
(12 BAR)



VISCOSITY
to 910,000 SSU
(200,000 cSt)



TEMPERATURE
to +300°F
(+150°C)

PORTING

- Camlock, ACME & DIN 11851 ports available

SEALING

- Single / Double O-ring
- Dry-run capable composite O-ring seals
- Mechanical seals
- Complete range of material options

GEAR BOX

- Ingress protected and sealed lightweight aluminum gearbox

ROTOR & CASING OPTIONS

- 316L stainless steel pump casing standard with interior finished to 3-A standards
- High efficiency rotors for low viscosity fluids

MOUNTING

- SAE 2 & 4 bolt mounting flange for close coupled hydraulic drive applications

OPTIONS

- Optional pressure relief valve to protect pump against excess pressure spikes

TYPICAL APPLICATIONS

- High Fructose
- Milk and Dairy
- Fruit Juice
- Corn Syrup
- Vinegar
- Vegetable Oils
- Chocolate

MAINTENANCE KITS

- Everything you need in one place
- Increase uptime
- Seal, bearing and elastomer kits available
- Reduce frequency of repairs
- Save time and money
- Increase service life
- Kits include exploded diagram and parts list

WHY CHOOSE THE RTP?

Your Needs	RTP	RTPe	Competitor
FDA compliant (GRAS) & 3A Certified	✓	✗	✓
Dry-Run Capable Seal*	✓	✓	✗
Reduces loading and unloading time by over 30%	✓	✗	✗
Ingress Protected & Sealed Maintenance-Free Gearbox	✓	✓	✗
Pump design reduces overhung load, vibration, and pipe stress	✓	✓	✗
Smallest footprint and lowest weight	✓	✓	✗
Solids Handling	✓	✓	✓
All 316L Stainless Steel Wet End	✓	✓	✓
Multiple Port Options	✓	✗	✓
4-Way Mounting Feet	✓	✗	✗



Yes



No/Not Ideal or Limitations

* consult Representative for details

VIKING PUMP CANADA

Viking Pump of Canada, Inc.
A Unit of IDEX Corporation
661 Grove Ave
Windsor, Ontario N9A 6M3 Canada
vikingpumpcanada.com

CONTACT YOUR STOCKING DISTRIBUTOR TODAY

YOHANCE HENRY
Market Manager
(519) 259-4268
yhenry@idexcorp.com

CUSTOMER SERVICE
1 (888) 845-7867
vwccs@idexcorp.com

GLOBAL LEADER IN POSITIVE DISPLACEMENT PUMPING SOLUTIONS: Cedar Falls, Iowa, USA | Windsor, Ontario, Canada | Shannon, Ireland | Eastbourne, United Kingdom

