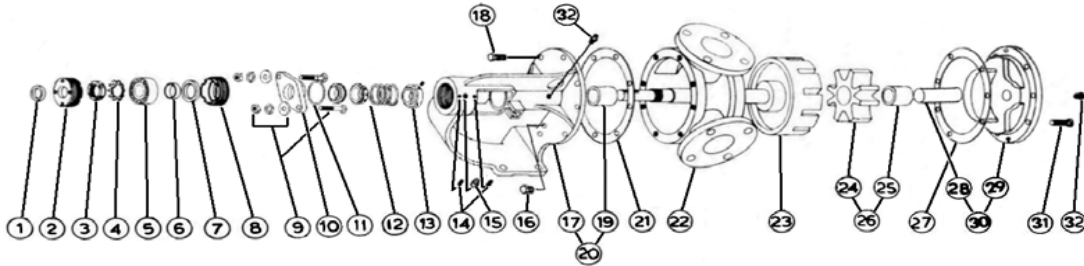


MODEL J-124 with Mechanical Seal

Subject to change without notice
 F.O.B. Factory

Supersedes all previous parts lists



ITEM	DESCRIPTION	MATERIAL	PART NUMBER	QTY	PRICE
1	Outer Lip Seal	Buna	195-00-175-120	1	
2	Adjusting Nut	Iron	100-02-100-310	1	
3	Locknut	Locknut N07	355-00-558-605	1	
4	Lockwasher	Lockwasher W07	355-00-550-605	1	
5	Ball bearing	Steel	2-055-021-375-00	1	
6	Bearing Spacer	Steel	490-00-100-605	1	
7	Inner Lip Seal	Buna	195-00-150-120	1	
8	Adjusting Nut	Iron	100-02-100-310	1	
9	Retainer Fasteners	3/8-16X2 1/2 Carriage Bolt 3/8" Lockwasher - Steel 3/8-16 Heavy Hex Nut - Steel	355-00-382-660 355-00-532-660 355-00-583-660	2 2 2	
10	Seal Seat Retainer	Iron Iron - PTFE Seal Only	470-02-212-310 470-02-312-310	1 1	
11	Retainer Oring	Viton	360-00-560-850	1	
12	Mechanical Seal Ass'y	Buna / Carbon vs Ni-Resist / Steel Buna / Carbon vs Ceramic / SS Viton / Carbon vs Ni-Resist / Steel Viton / Carbon vs Ceramic / SS PTFE	335-420-0020 335-00-180-040 335-00-210-055 335-00-180-050 335-492-0001	1 1 1 1 1	
13	Driving Ring	Steel Set Screws for Driving Ring	330-00-125-620 355-00-271-660	1 1	
14	Adjusting Nut Set Screw	1/4-28X5/16Cone Point SS Screw	355-00-280-660	2	
15	Grease Fitting	1/4-28 45 Deg Grease Fitting	325-00-100-605	1	
16	Pipe Plug	Steel	390-00-050-605	1	
17	Bracket	Iron Iron - PTFE Seal Only	165-02-095-310 165-02-125-310	1 1	
18	Bracket Bolt	7/16-14X7/8 Hex Cap Screw GR5	355-00-082-670	8	
19	Bracket Bushing	Bronze Carbon	175-02-140-050 175-02-140-140	1 1	
20	Bracket and Bushing Ass'y	Iron / Bronze - Buna or Viton Seal Only Iron / Carbon - Buna or Viton Seal Only Iron / Bronze - PTFE Seal Only Iron / Carbon - PTFE Seal Only	170-03-095-329 170-03-095-332 170-03-090-330 170-03-090-332	1 1 1 1	
21	Bracket Gasket	Standard	245-00-050-240	1	
22	Casing	Iron	190-02-385-310	1	
23	Rotor and Shaft Ass'y	Iron / Steel -	455-03-364-349 -	1 -	
24	Idler Gear	Iron	2-420-001-100-40	1	
25	Idler Bushing	Bronze Carbon	2-108-030-454-02 2-108-016-880-02	1 1	
26	Idler and Bushing Ass'y	Iron / Bronze Iron / Carbon	285-03-180-330 285-03-180-332	1 1	
27	Head Gasket	Standard	245-00-050-240	3	
28	Idler Pin	Steel - Greasable Steel - Non-Greasable Nitalloy - Greasable Nitalloy - Non-Greasable	295-00-090-690 295-00-100-690 295-00-090-400 295-00-100-400	1 1 1 1	
29	Head	Plain Relief Valve	2-380-008-100-00 265-02-220-310	1 1	
30	Head and Idler Pin Ass'y	Plain / Steel Greasable Plain / Steel non-Greasable Relief Valve / Steel Greasable Relief Valve / Steel Non-Greasable	270-03-210-350 270-03-215-350 270-03-225-350 270-03-220-350	1 1 1 1	
31	Head Bolt	7/16-14X7/8 Hex Cap Screw GR5 7/16-14X1 Hex Cap Screw GR5 7/16-14X7/8 Socket Cap Screw	355-00-082-670 355-00-085-670 355-00-234-660	6 4 2	
32	Grease Fitting	1/8NPT Straight w/cap Grease Fitting	325-00-050-605	2	