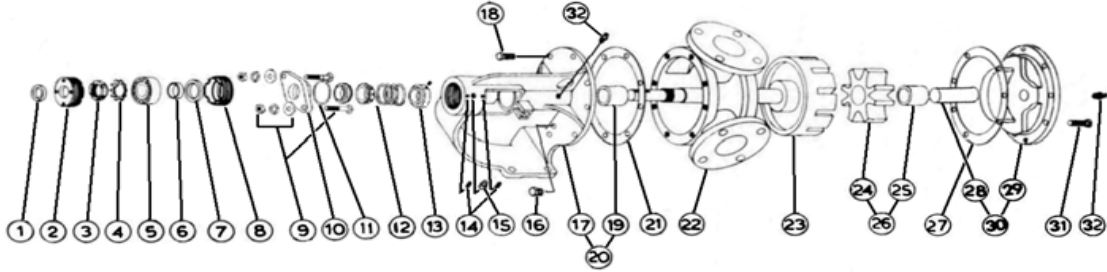


**MODEL K-124 with Mechanical Seal**

Subject to change without notice  
 F.O.B. Factory

Supercedes all previous parts lists



ITEM	DESCRIPTION	MATERIAL	PART NUMBER	QTY	PRICE
1	Outer Lip Seal	Buna	195-00-175-120	1	
2	Adjusting Nut	Iron	100-02-100-310	1	
3	Locknut	Steel - Locknut N07	355-00-558-605	1	
4	Lockwasher	Steel - Lockwasher W07	355-00-550-605	1	
5	Ball bearing	Steel	2-055-021-375-00	1	
6	Bearing Spacer	Steel	490-00-100-605	1	
7	Inner Lip Seal	Buna	195-00-150-120	1	
8	Adjusting Nut	Iron	100-02-100-310	1	
9	Retainer Fasteners	3/8-16X2 1/2 Carriage Bolt	355-00-382-660	2	
		Flat Washer - Steel	355-00-532-660	2	
		3/8" Lockwasher - Steel	355-00-583-660	2	
10	Seal Seat Retainer	Iron	470-02-212-310	1	
		Iron - PTFE Seal Only	470-02-312-310	1	
11	Retainer Oring	Viton	360-00-560-850	1	
12	Mechanical Seal Ass'y	Buna / Carbon vs Ni-Resist / Steel - BF871	335-420-0020	1	
		Buna / Carbon vs Ceramic / SS - BF1C1	335-00-180-040	1	
		Viton / Carbon vs Ni-Resist / Stl - XP871	335-00-210-055	1	
		Viton / Carbon vs Ceramic / SS - XP1C1	335-00-180-050	1	
		PTFE	335-492-0001	1	
		-			
13	Driving Ring	Steel	330-00-125-620	1	
		1/4-20X1/4 Cup Point SS Screw	355-00-271-660	1	
14	Adjusting Nut Set Screw	1/4-28X5/16Cone Point SS Screw	355-00-280-660	2	
15	Grease Fitting	1/4-28 45 Deg. Grease Fitting	325-00-100-605	1	
16	Pipe Plug	Steel - 1/8" NPT Hex Head Plug	390-00-050-605	1	
17	Bracket	Iron	165-02-095-310	1	
		Iron - PTFE Seal Only	165-02-125-310	1	
18	Bracket Bolt	7/16-14X7/8 Hex Cap Screw GR5	355-00-082-670	8	
19	Bracket Bushing	Bronze	175-02-140-050	1	
		Carbon	175-02-140-140	1	
20	Bracket and Bushing Ass'y	Iron / Bronze - Buna or Viton Seal Only	170-03-095-329	1	
		Iron / Carbon - Buna or Viton Seal Only	170-03-095-332	1	
		Iron / Bronze - PTFE Seal Only	170-03-090-330	1	
		Iron / Carbon - PTFE Seal Only	170-03-090-332	1	
21	Bracket Gasket	Standard	245-00-050-240	1	
22	Casing	Iron	190-02-440-310	1	
23	Rotor and Shaft Ass'y	Iron / Steel	455-03-412-349	1	
		Ductalloy / Steel	455-03-412-139	1	
24	Idler Gear	Iron	2-420-200-100-50	1	
25	Idler Bushing	Bronze	2-108-007-454-04	1	
		Carbon	2-108-014-880-04	1	
26	Idler and Bushing Ass'y	Iron / Bronze	285-03-200-330	1	
		Iron / Carbon	285-03-200-332	1	
27	Head Gasket	Standard	245-00-050-240	3	
28	Idler Pin	Steel - Greasable	295-00-110-690	1	
		Steel - Non-Greasable	295-00-130-690	1	
		Nitralloy - Greasable	2-435-012-321-00	1	
		Nitralloy - Non-Greasable	295-00-130-400	1	
29	Head	Plain	2-380-206-100-00	1	
		Relief Valve	265-02-270-310	1	
30	Head and Idler Pin Ass'y	Plain / Steel Greasable	270-03-260-350	1	
		Plain / Steel non-Greasable	270-03-265-350	1	
		Relief Valve / Steel Greasable	270-03-270-350	1	
		Relief Valve / Steel Non-Greasable	270-03-275-350	1	
		Plain / Nitralloy Greasable	270-03-260-335	1	
		Plain / Nitralloy Non-Greasable	270-03-265-335	1	
		Relief Valve / Nitralloy Greasable	270-03-270-335	1	
		Relief Valve / Nitralloy Non-Greasable	270-03-275-335	1	
31	Head Bolt	Plain Head	7/16-14X7/8 Hex Cap Screw GR5	6	
		Relief Valve	7/16-14X1 Hex Cap Screw GR5	4	
			7/16-14X7/8 Socket Cap Screw	2	
32	Grease Fitting	1/8NPT Straight w/cap Grease Fitting	325-00-050-605	2	