

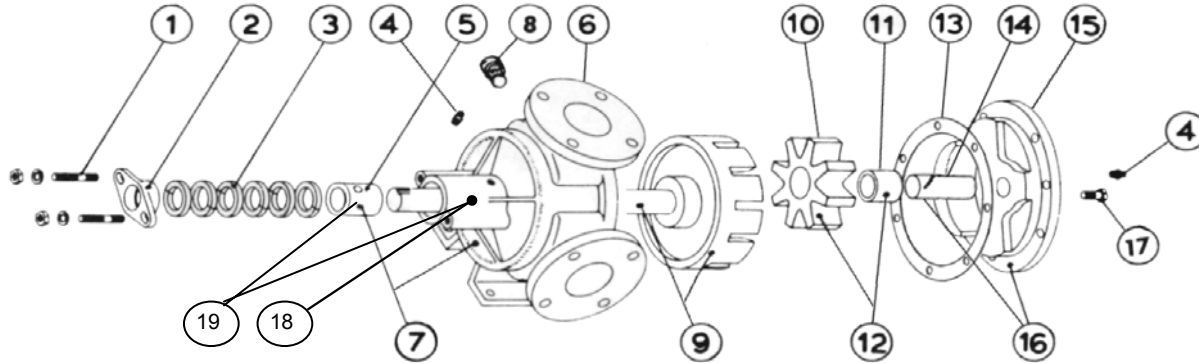
VIKING GENERAL PURPOSE JACKETED UNMOUNTED PUMP

BULLETIN: EVD-LQ230P-V
PAGE: 1
EFFECTIVE: 11/2015

MODEL LQ-230 with Packing

Subject to change without notice
F.O.B. Factory

Supersedes all previous parts lists



| ITEM | DESCRIPTION | MATERIAL | PART NUMBER | QTY | PRICE |
|------|--|---|------------------|-----|-------|
| 1 | Packing Gland Fasteners | 7/16-14x2 1/2 T5/8 N1 3/8 Stud | 355-00-437-620 | 2 | |
| | | 7/16 Flat Washer | 355-00-499-950 | 2 | |
| | | 7/16 Lock Washer | 355-00-535-660 | 2 | |
| | | 7/16-14 Heavy Hex Nut | 355-00-588-660 | 2 | |
| 2 | Packing Gland | Iron | 370-02-090-310 | 1 | |
| 3 | Packing Set | Standard - Up To 500 Deg F - C1065 | 365-00-550-780 | 1 | |
| | | High Temperature - 1625GF | 365-00-550-280 | 1 | |
| 4 | Grease Fitting | Steel - 1/8 NPT Straight Grease Fitting | 325-00-025-605 | 2 | |
| 5 | Casing Bushing | Bronze | 175-02-200-050 | 1 | |
| | | Carbon | 2-116-017-880-00 | 1 | |
| 6 | Casing | Iron - Jacketed - For Non-Jacketed RBS | 190-02-750-310 | 1 | |
| | | Iron - Jacketed - For Jacketed RBS | 190-02-762-310-S | 1 | |
| 7 | Casing and Bushing Ass'y | Iron / Bronze - For Non-Jacketed RBS | Consult Factory | 1 | |
| | | Iron / Carbon - For Non-Jacketed RBS | Consult Factory | 1 | |
| 8 | Pipe Plug | 1/4-18 Hex Head Pipe Plug | 390-00-125-605 | 2 | |
| 9 | Rotor and Shaft Ass'y | Iron / Steel | 455-03-540-349 | 1 | |
| | | Ductalloy / Steel | 455-03-540-139 | 1 | |
| 10 | Idler | Iron | 2-421-001-100-50 | 1 | |
| 11 | Idler Bushing | Bronze | 2-116-008-454-04 | 1 | |
| | | Carbon | 2-116-017-880-04 | 1 | |
| 12 | Idler and Bushing ass'y | Iron / Bronze | 285-03-260-330 | 1 | |
| | | Iron / Carbon | 285-03-260-332 | 1 | |
| 13 | Head Gasket | Standard | 245-00-060-240 | 2 | |
| 14 | Idler Pin | Steel - Greasable | 2-436-006-291-00 | 1 | |
| | | Steel Non-greasable | 295-00-180-690 | 1 | |
| 15 | Head | Iron - Plain | 2-385-013-100-00 | 1 | |
| | | Iron - Relief Valve | 265-02-410-310 | 1 | |
| 16 | Head and Idler Pin Ass'y | Iron - Plain - Non-Jacketed / Steel - Greasable | 270-03-400-350 | 1 | |
| | | Iron - Plain - Jacketed / Steel - Greasable | 270-03-430-350 | 1 | |
| | | Iron - Relief Valve / Steel - Greasable | 270-03-410-350 | 1 | |
| | | Iron - Plain - Non Jacketed / Steel - Non-greasable | 270-03-405-350 | 1 | |
| | | Iron - Plain - Jacketed / Steel - Non-Greasable | 270-03-435-350 | 1 | |
| | | Iron - Relief Valve / Steel - Non-greasable | 270-03-415-350 | 1 | |
| 17 | Head Bolts | 7/16-14x1 Hex Cap Screw | 355-00-085-670 | 7 | |
| 18 | Rotor Bearing Sleeve | Iron - Jacketed | 445-02-030-310 | 1 | |
| 19 | Rotor Bearing Sleeve and Bushing A'ssy | Iron - Jacketed / Bronze | 450-03-030-330 | 1 | |
| | | Iron - Jacketed / Carbon | 450-03-030-332 | 1 | |