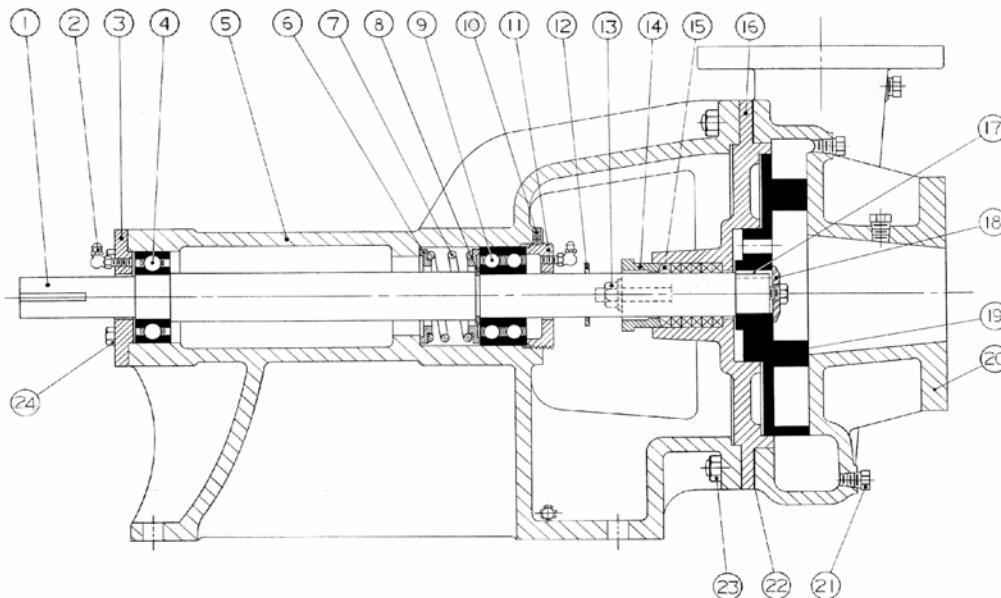


**Series 540, Model 1-1 1/2A with Packing**

Subject to change without notice  
 F.O.B. Windsor, Ontario

Supercedes all previous parts lists



ITEM	DESCRIPTION	MATERIAL	PART NUMBER	QTY	PRICE
1	Shaft	Steel	480-12-400-640	1	
		304 Stainless Steel	480-13-400-550	1	
2	Grease Fitting	1/4-28 90 Deg Grease Fitting	325-10-025-605	2	
3	Bearing Cap	Iron	180-12-100-310	1	
4	Outer Ball Bearing	Steel - 6206C3	150-10-125-605	1	
5	Bracket	Iron	165-12-050-310	1	
6	Spring Retainer	Aluminum	145-12-050-010	2	
7	Spring	Spring Steel - M1631A	495-10-050-605	1	
8	Retaining ring	Spring Steel - 1460-118	430-10-025-605	1	
9	InnerBall Bearing	Steel - 3306CS	150-00-225-605	1	
10	Set Screw	5/16-18X5/16 Cup Point Set Screw	355-00-291-660	1	
11	Adjusting Nut	Iron	100-12-025-310	1	
12	Shaft Flinger	Rubber	240-10-400-450	1	
13	Packing Gland Fasteners	7/16-14X3 1/2 T11/16 N21/2 Stud	355-00-442-620	2	
		7/16-14 Heavy Hex Nut	355-00-588-660	2	
		7/16" Lockwasher	355-00-535-660	2	
14	Packing Gland	Iron	370-12-400-310	1	
15	Packing Ring Set	Standard Packing - C1065	365-10-140-780	1	
16	Back Plate	Iron	110-12-025-310	1	
17	Square Key	1/4X1/4X7/8 Keystock	310-10-050-530	1	
18	Impeller Fasteners	Washer - Stainless Steel - C2590-4	515-10-050-530	1	
		1/2-13X1 1/4 Hex Cap Screw	355-00-123-530	1	
		1/2" Lockwasher	355-00-538-530	1	
19	Impeller ***	Iron	305-12-450-310	1	
20	Casing	Iron	190-12-100-310-S	1	
21	Pipe Plug	1/4-18 Hex Head Plug	390-00-125-605	4	
22	Casing Gasket	Standard	245-10-060-240	3	
23	Casing Fasteners	7/16-14X2 1/2 Hex Cap Screw Grade 5	355-00-103-670	0	
		7/16-14X2 1/2 T5/8 N1 3/8 Stud	355-00-436-620	8	
		7/16-14 Heavy Hex Nut	355-00-588-660	8	
24	Bearing Cap Bolts	5/16-18X3/4 Hex Cap Screw-Grade 5	355-00-035-670	4	

\*\*\* Specify the impeller diameter or serial number with every order.  
 Casing may not be exactly as shown.